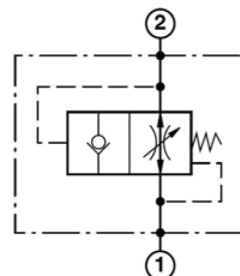
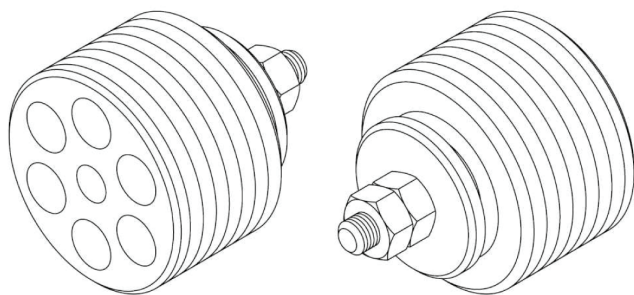
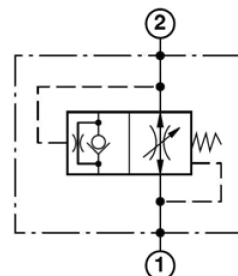


Valvola paracadute
Screw-in cartridge hose burst valve
mod. VPN



Valvola di blocco completo
del carico
Load full lock valve



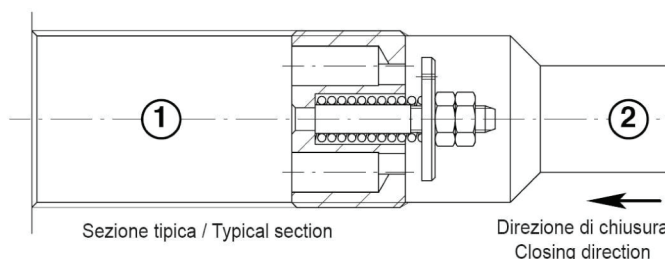
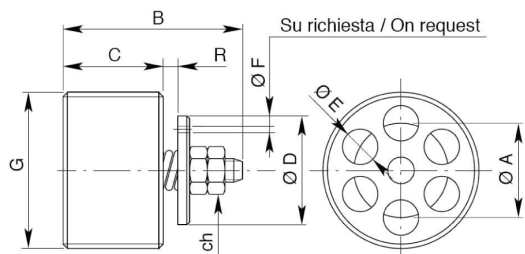
Valvola di abbassamento
lento del carico
Load slow motion valve

Dopo il nostro montaggio le valvole risultano regolate
rispettivamente a circa 0.5mm (per G=1/4" gas e G=3/8" gas) e
0.7mm (per G=1/2" gas e G=3/4" gas).

After our assembly procedure the valves are respectively set at
about 0.5mm (for G=1/4" gas and G=3/8" gas) and 0.7mm (for
G=1/2" gas and G=3/4" gas).

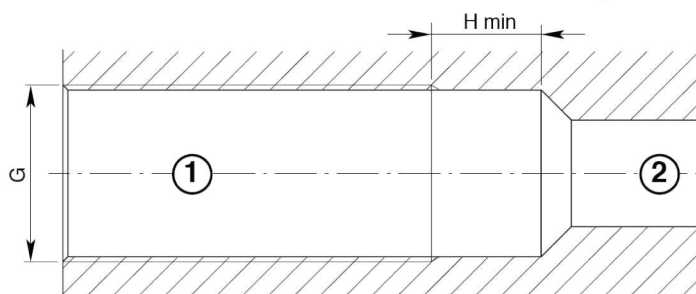
Dati e tarature ottenuti usando olio con viscosità 30 cSt a 50°C
Performances and calibrations are carried out by using hydraulic oil
with 30 cSt viscosity at 50°C

Viscosità consigliate Recommended viscosity	10 ÷ 420 cSt
Temperature di lavoro Working temperature	-20 ÷ +90 °C
Filtrazione assoluta Absolute filtration	25 µ



Sezione tipica / Typical section

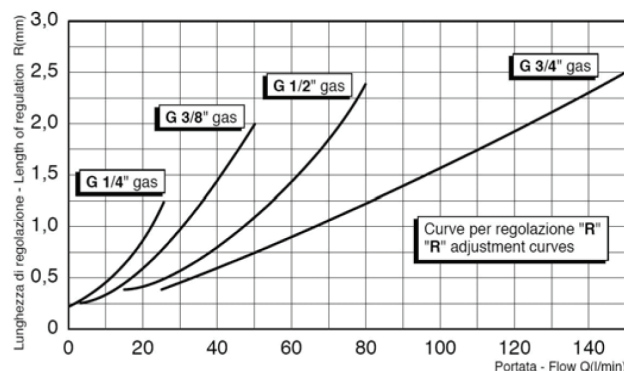
Direzione di chiusura
Closing direction



Modello Type	G	A	B	C	D	E	H	R	ch	Coppia di serraggio Torque	Portata max Max flow	Pressione massima Max pressure
VPN-14	1/4"GAS	8.5	17.5	8	9.5	2.4	11	0.5	5.5	2 Nm 1.5 lb ft	25 l/min 6.6 gpm	350 bar 5000 psi
VPN-38	3/8"GAS	10.5	23	10.5	12.5	3.5	11	0.5	5.5	3 Nm 2.25 lb ft	50 l/min 13 gpm	350 bar 5000 psi
VPN-12	1/2"GAS	13	25	12	15	4.5	15	0.7	7	4 Nm 3 lb ft	80 l/min 21 gpm	350 bar 5000 psi
VPN-34	3/4"GAS	16	30.5	17	18	6	16	0.7	7	10 Nm 7.5 lb ft	150 l/min 40 gpm	350 bar 5000 psi

Sigla di ordinazione / Ordering code

VPN-14	-
Modello Type	- standard gap "R" vedi tabella / see table R gap not standard (from 0.2 to 2.7)



I dati non sono impegnativi, CBF si riserva di apportare modifiche senza preavviso.
The specifications are not binding, CBF reserves the right to introduce modifications without notice.