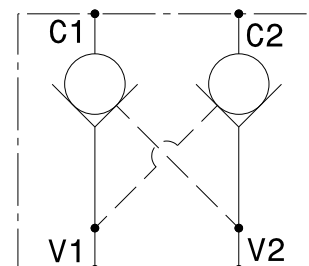
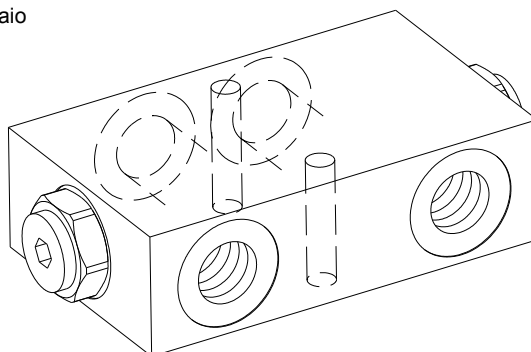


Valvola di blocco pilotata a doppio effetto in linea
In line, double effect, pilot operated check valve

mod. VBD-L

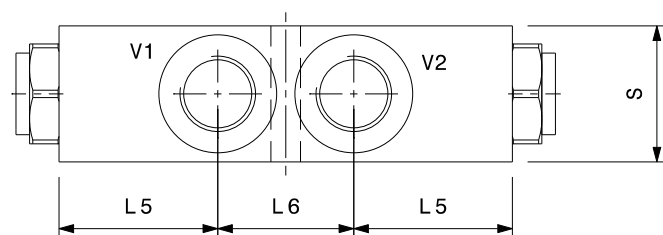
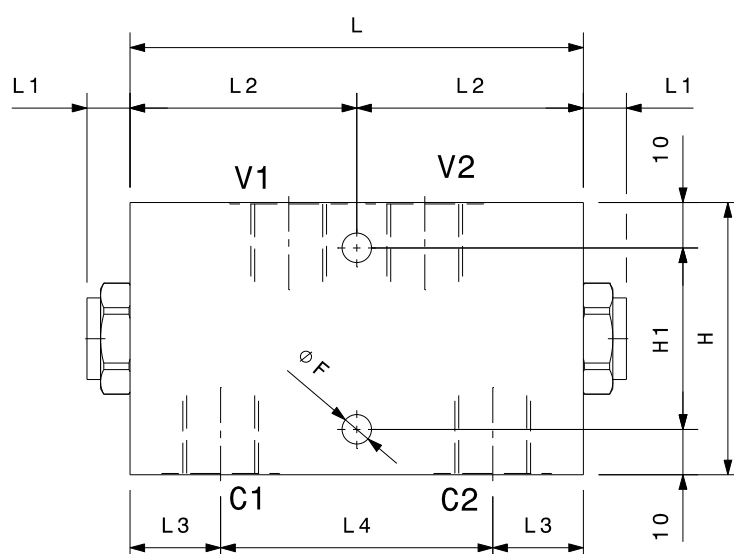
Versione con corpo in alluminio o in acciaio
Aluminium or steel body version



Modello Type	V C	Portata massima Max flow l/min	Pressione massima Max pressure bar	Pressione di apertura Cracking pressure bar
VBD-L-14	1/4" GAS	20	350	3
VBD-L-38	3/8" GAS	35	350	3
VBD-L-12	1/2" GAS	50	350	2
VBD-L-34	3/4" GAS	80	250	2

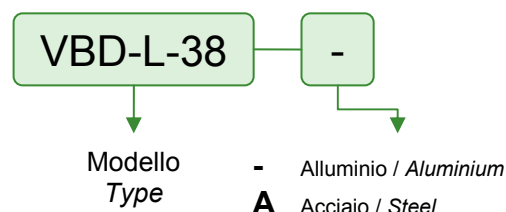
Rapporto di pilotaggio Pilot ratio	4:1
---------------------------------------	-----

Dati e tarature ottenuti usando olio con viscosità 30 cSt a 50°C Performances and calibrations are carried out by using hydraulic oil with 30 cSt viscosity at 50°C	
Viscosità consigliate Recommended viscosity	10 ÷ 420 cSt
Temperatura di lavoro Working temperature	-20 ÷ +90 °C
Filtrazione assoluta Absolute filtration	25 µ



Dimensioni	L	L1	L2	L3	L4	L5	L6	H	H1	S	F
VBD-L-14	100	10	50	20	60	35	30	60	40	30	6.5
VBD-L-38	100	10	50	20	60	35	30	60	40	30	6.5
VBD-L-12	100	10	50	20	60	30	40	60	40	35	8.5
VBD-L-34	110	20	55	23	64	32.5	45	70	50	40	8.5

Sigla di ordinazione / Ordering code



I dati non sono impegnativi, **CBF** si riserva di apportare modifiche senza preavviso.
The specifications are not binding, **CBF** reserves the right to introduce modifications without notice.