

GENERAL DESCRIPTION

The BMP hydraulic motor series are small volume, economical type, Spool Valve design hydraulic motors. This kind of motors provide high power, compact volume and low weight.

MAIN CHARACTERISTICS

Spool Valve Design offers superior performance and smooth operation.

High Pressure Shaft Seal allows motor to work in either parallel or series circuits and offers superior seal life.

Advanced Gerotor Design provides compact volume, high power and low weight.

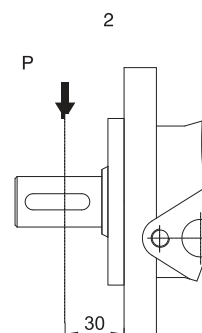
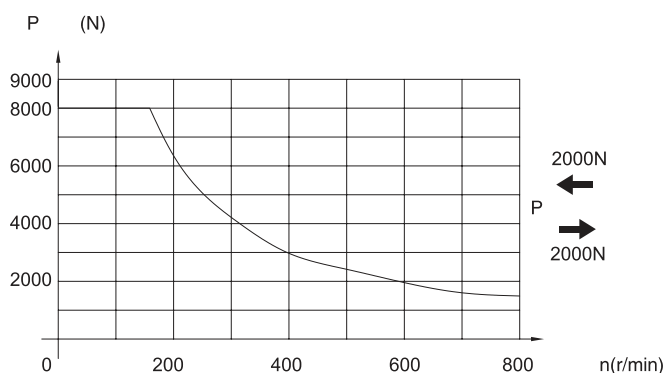
BMP TECHNICAL SPECIFICATIONS

TYPE		BMP-50	BMP-80	BMP-100	BMP-125	BMP-160	BMP-200	BMP-250	BMP-315	BMP-400
Displacement (cm ³ /rev)		52.9	79.3	98.2	120.9	158.7	196.4	241.8	317.3	392.9
	cont.	14	14	14	14	14	14	11	9	7
Max.Pressure.Drop (Mpa)	int.	17.5	17.5	17.5	17.5	17.5	17.5	14	11	9
	peak.	20	20	20	20	20	20	16	13	11
	cont.	89	150	191	235	307	365	378	378	378
Max.torque (N.m)	int.	110	185	231	292	376	440	465	465	465
	peak.	130	215	268	336	430	506	537	537	537
Speed.Range(cont.)(r/min)		10-800	10-770	9-615	9-480	8-385	7-310	5-250	5-195	5-155
Max.Flow(cont.)(L/min)		40	60	60	60	60	60	60	60	60
Max.Output.Power(cont.)(Kw)		7	10	10	10	10	8	6	5	4
Weight (kg)		5.6	5.7	5.9	6.0	6.2	6.4	6.6	6.9	7.4

Intermittent operation the permissible values may occur for max. 10% of every minute

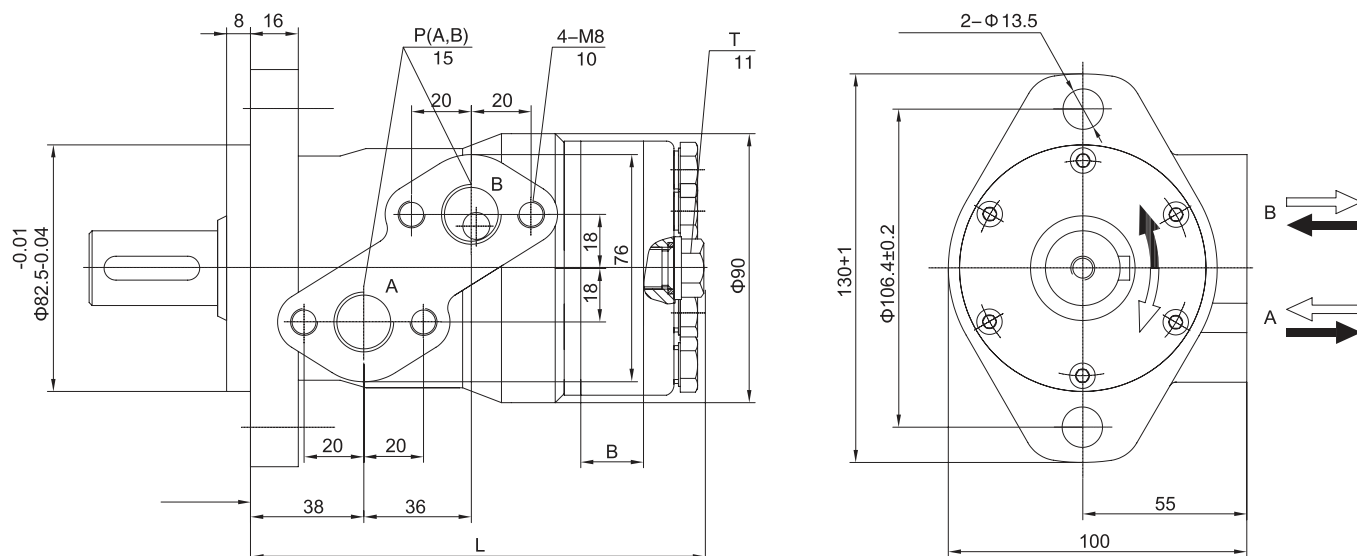
Peak load: the permissible values may occur for max. 1% of every minute

PERMISSIBLE SHAFT LOADS

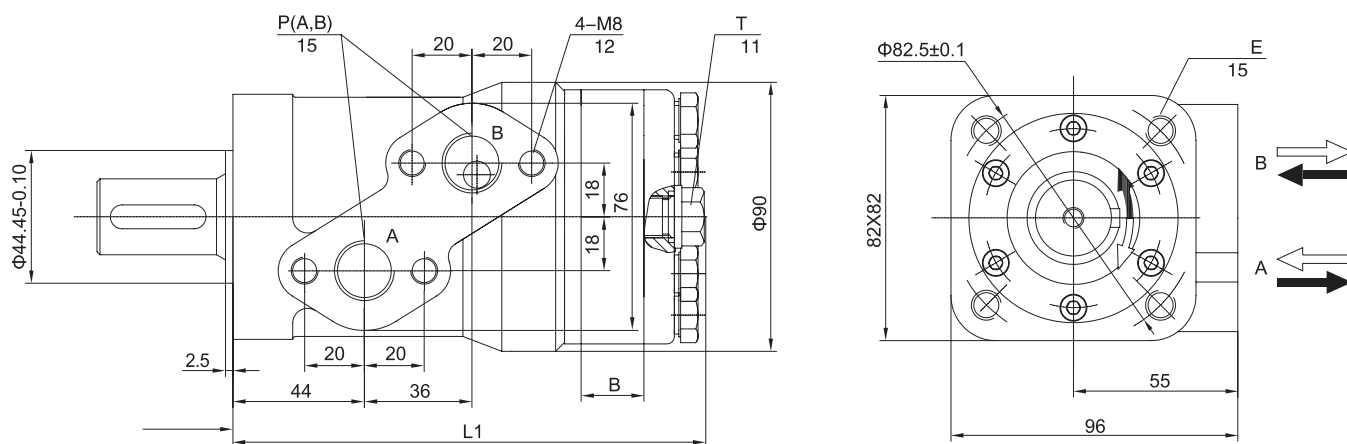


■ BMP DIMENSIONS AND MOUNTING DATA

A Version 2-hole oval flange



C,C1 Version Square flange



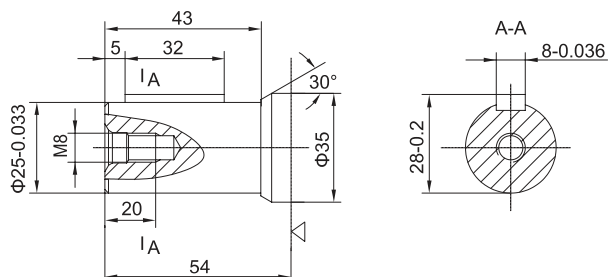
Flange	E
C	4-M10
C1	4- $\frac{3}{8}$ -16UNC

TYPE	BMP-50	BMP-80	BMP-100	BMP-125	BMP-160	BMP-200	BMP-250	BMP-315	BMP-400
L	141	145	147	150	155	160	166	176	186
L1	147	151	153	156	161	166	172	182	192
B	7	11	13	16	21	26	32	42	52

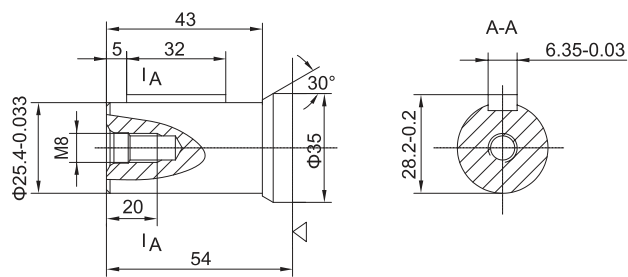
BMP SHAFT VERSIONS

Match with A flange

C 25 Cylindrical shaft, parallel key 8X7X32

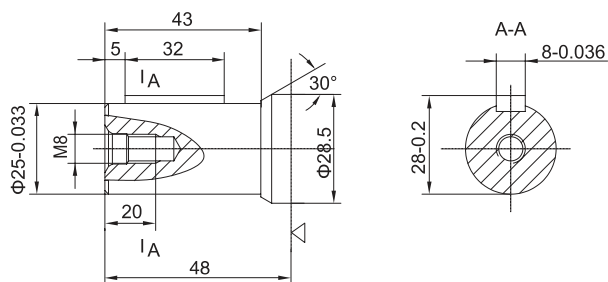


C 25.4 Cylindrical shaft, parallel key 6.35X6.35X32

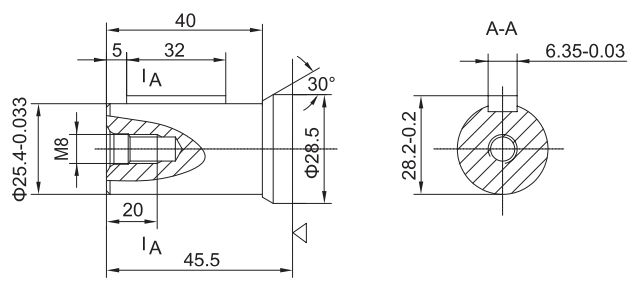


Match with C, C1 flange

C 25 Cylindrical shaft, parallel key 8X7X32



C 25.4 Cylindrical shaft, parallel key 6.35X6.35X32



BMP ORDERING CODE

	1	2	3	4	5
BMP	-				/

1	Displacement
50, 80, 100, 125, 160, 200, 250, 315, 400	

2	Shaft
C 25	Φ25 8X7X32
C 25,4	Φ25.4 6.35X6.35X32

3	Mounting Flange
A	2-Φ13.5 Φ82.5
C	4-M8 Φ44.45
C1	4-3/8-16UNC Φ44.45

4	Ports
	P(A,B) T
G	G1/2 M14X1.5
M1	M18X1.5 M14X1.5
M2	M22X1.5 M14X1.5
U	7/8-14UNF M14X1.5
N	NPT 1/2 M14X1.5