

# MB/31

# MONOBLOCK VALVES



## MB31-1-A213/B-ECO-H15

P-T-A-B da 3/8" codice 181374

P-T-A-B da 1/2" codice 181376

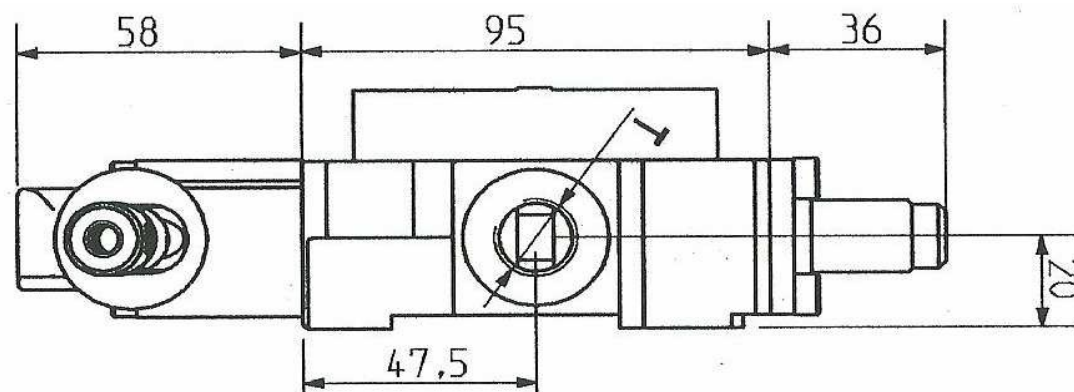
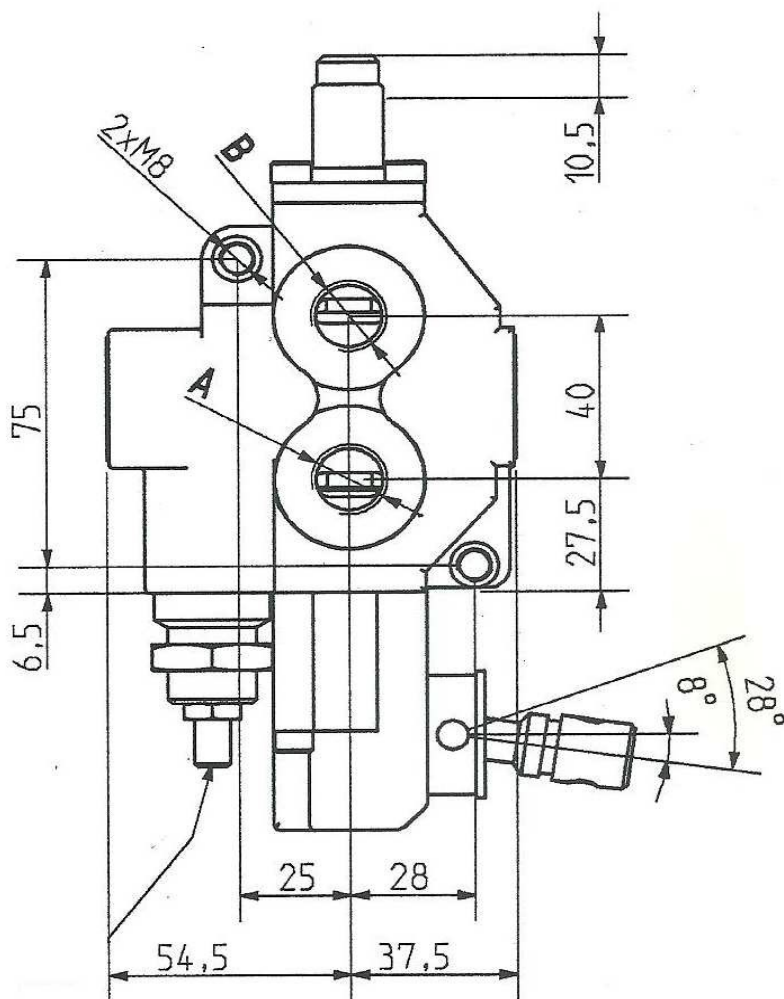
LEVA DI COMANDO STANDARD L= 150 mm

STANDARD HANDLE LENGHT = 150 mm

PESO KG 1,8

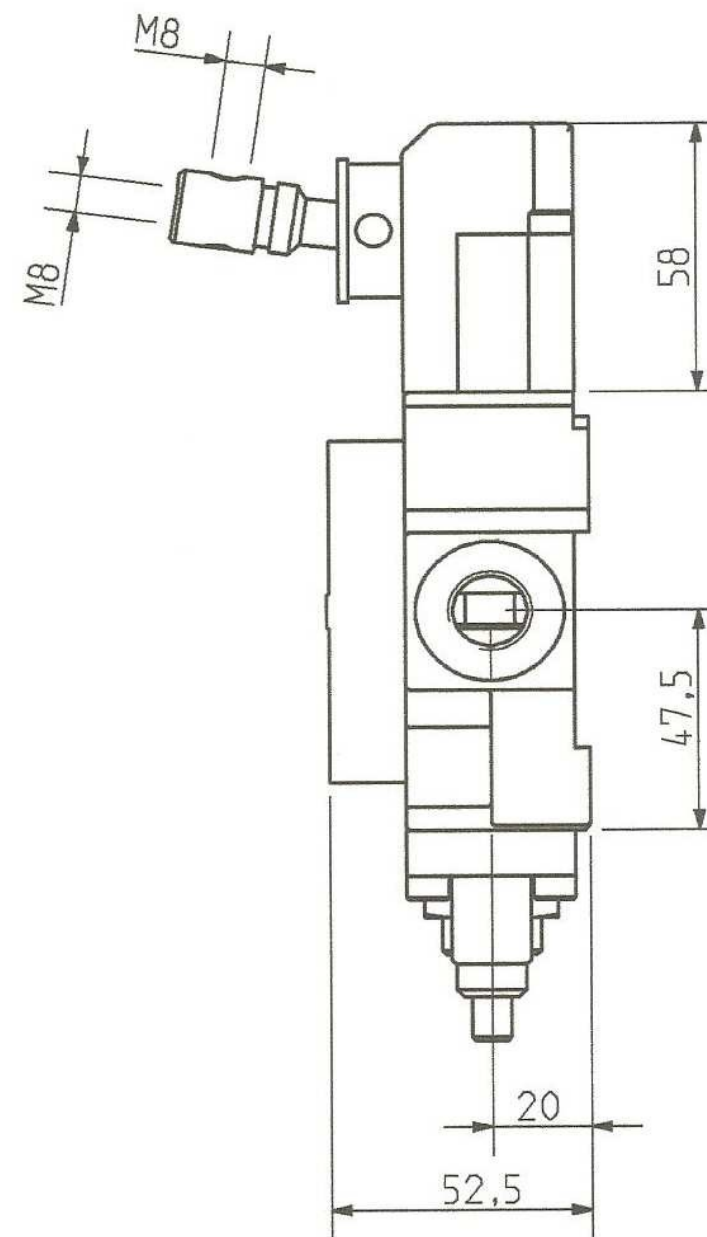
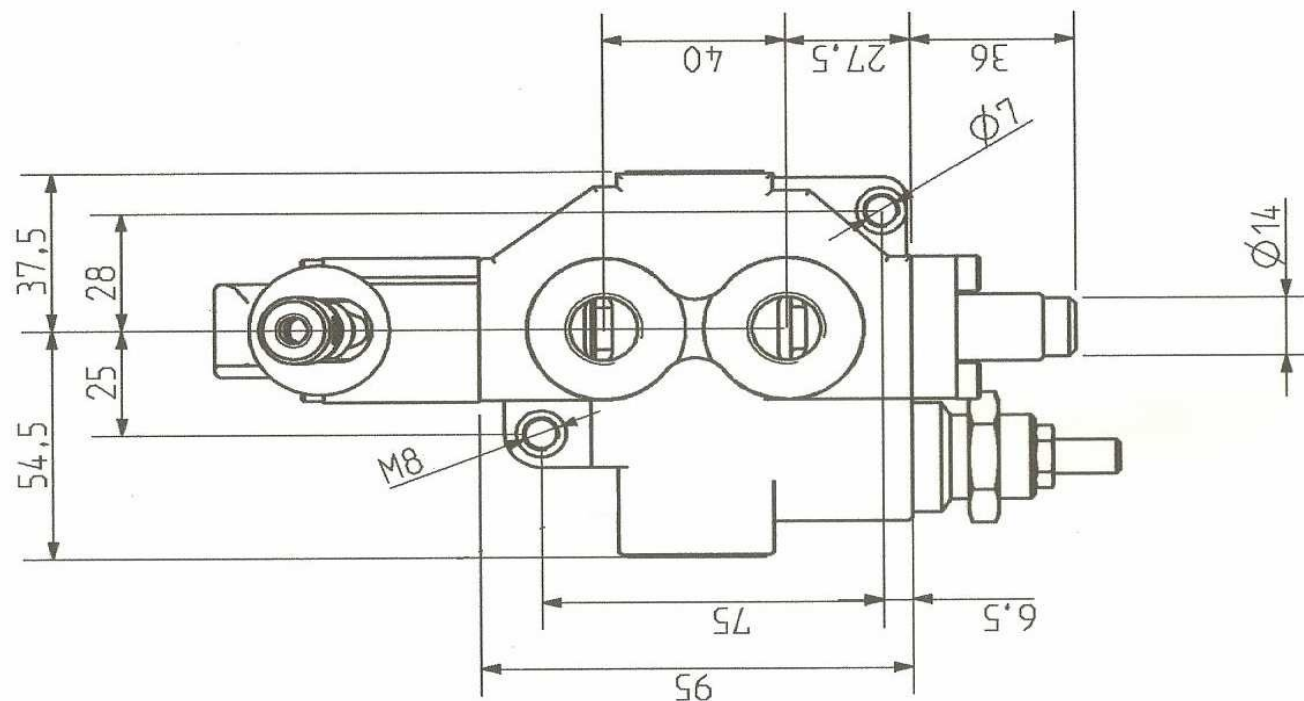
### FILETTATURE STANDARD

ATTACCHI	STANDARD	OPTIONAL
P	3/8 BSP	1/2 BSP
A-B	3/8 BSP	1/2 BSP
T	3/8 BSP	1/2 BSP



# MB/31

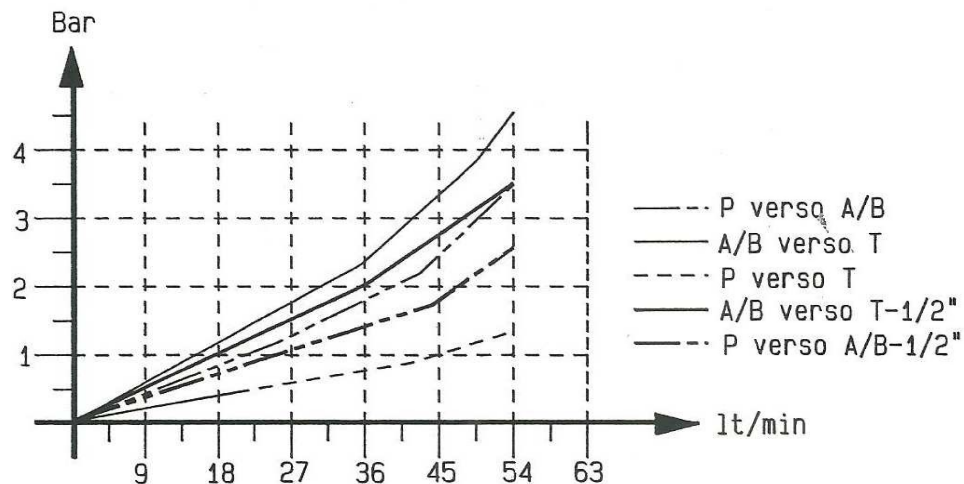
## MONOBLOCK VALVES



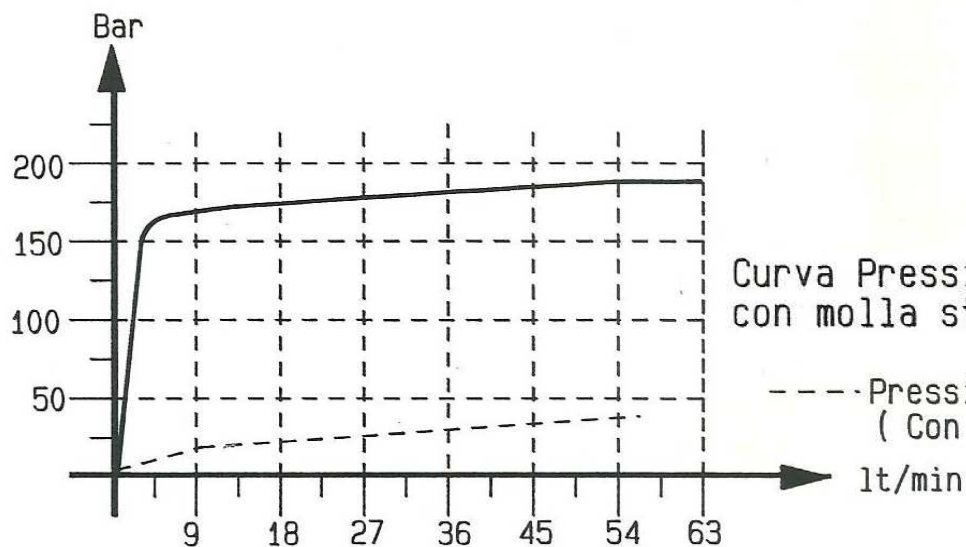
**MB/31---A---213/B---ECO---00---00---00**

- Tipo
- Tipo di stelo
- Azionamento
- 00= Sinistro  
DX=Destro
- Trattam superfici:  
00=Grezzo  
YP=Zincato Nikel
- Attacchi  
00=3/8 BSP  
12=1/2 BSP

## DROP OF PRESSURE MB31-1 AND CURVES FLOW/PRESSURE



CONDIZIONI DI PROVA  
 1-Temperatura ambiente= 18  
 2-Temperatura fluido= 50  
 3-Viscosità fluido= 3,5 E



Curva Pressione/Portata per valvola di massima pressione diretta con molla standard adatta per pressioni da 80 a 210 bar