

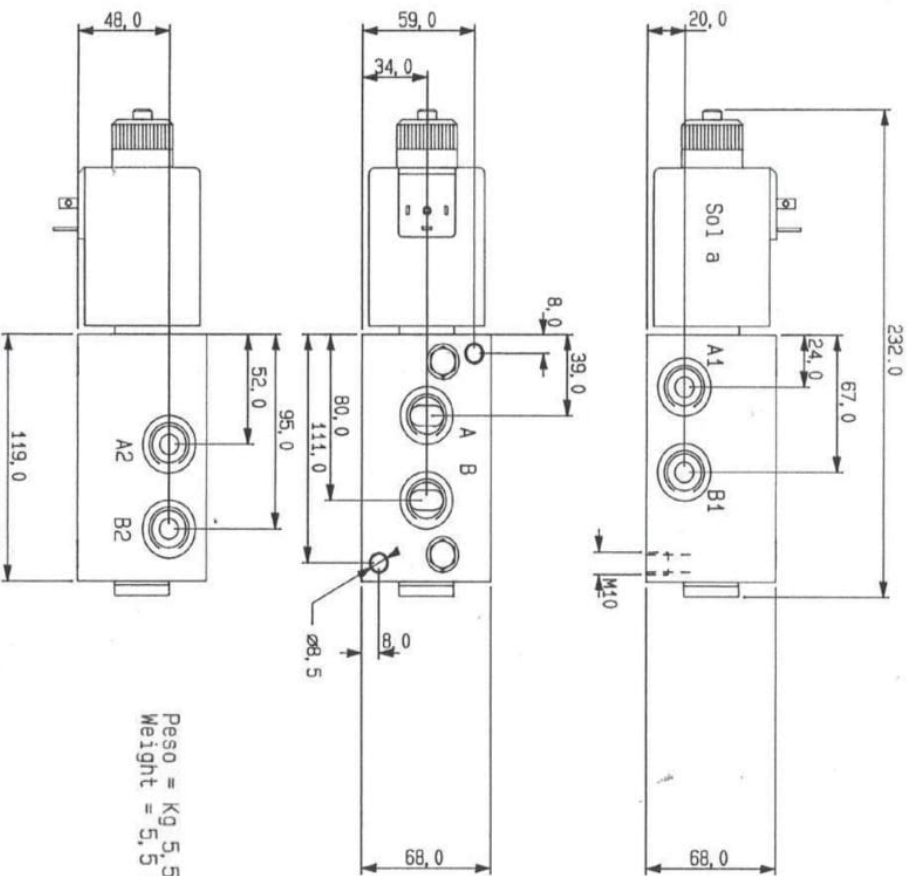
EDF

SOLENOID DIVERTER VALVES 6 WAYS



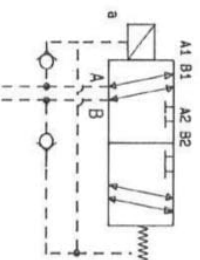
EDF10/6/2-1/2" BSP-HF-SINGOL

EDF12/6/2-3/4" BSP-HF-SINGOL



Peso = Kg 5,5
Weight = 5,5 Kg

Tutti gli attacchi sono
da 1/2 BSP
All ports are 1/2 BSP



Portata massima:
Maximum flow:
Pressione di esercizio:
Exercise pressure:

75 lt/min (1,25 Dm/sec)
75 lt/min (1,25 Dm/sec)
210 bar (21 Mpa)
210 bar (21 Mpa)

Tutti gli attacchi sono
da 3/4 BSP
All ports are 3/4 BSP

