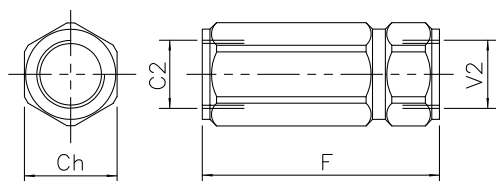
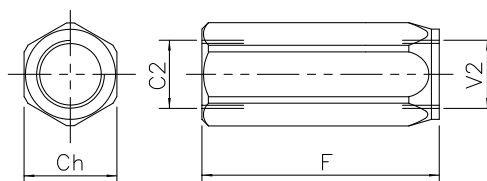


VALVOLA DI BLOCCO CON TENUTA A SPILLO CHECK VALVE, POPPET TYPE

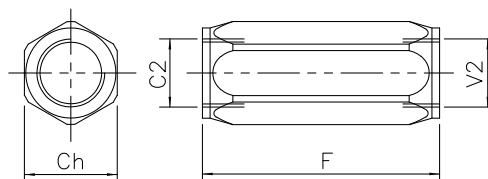
(1/4" - 3/8" - 3/4" - 1")



(1/2" - 1 1/4")



(1 1/2")



DIMENSIONI DIMENSIONS

NUMERO VALVOLA VALVE NUMBER	CH	F	Attacchi Port size V2-C2 GAS (BSPP)	Luce nominale rated size DN	Portata max Max flow-rate l/min - GPM	Peso Weight kg
016	19	57	1/4"	6	12-3.2	0,10
017	24	61	3/8"	8	23-6	0,16
018	27	75	1/2"	11	40-10.6	0,31
019	36	92	3/4"	16	60-15.8	0,50
020	41	110	1"	20	95-25	0,75
001	55	135	1 1/4"	25	160-42.2	1,75
002	60	135	1 1/2"	30	230-60	1,90

CODICE DI ORDINAZIONE HOW TO ORDER

003 016 0 J 0

Numero valvola / Valve number

016

017

018

019

020

001

002

Inizio apertura
Cracking pressure

J

1 bar
Molla (colore nero)
Spring (black)

W

6-8 bar
Molla (colore giallo)
Spring (yellow)