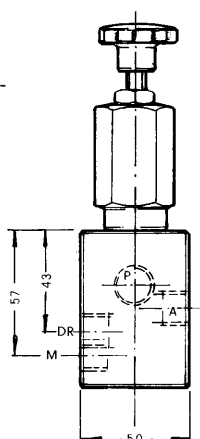
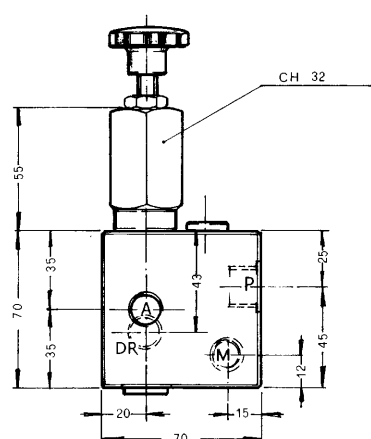


Direct Acting Line Mount
Pressure Reducing Valve

Pressure 350 Bars
Flow 45 l/min

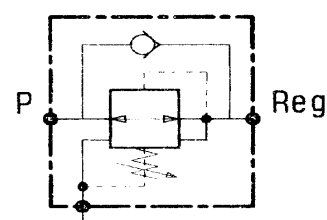


Direct acting pressure reducing valve giving fast response, accurate control and low hysteresis. A choice of four different springs provides for precise pressure control

Unit is supplied with integral non-return valve, drain port and pressure gauge port.

(All dimensions in mm)

Circuit Symbol



Part No:	Ports A+ P	Port DR+M	Spring Range
VRP/14-L 002.xxx.000	1/4" BSP	1/4" BSP	Blue 0 -150 Yellow 0 - 350
VRP/38-L 002.050.000	3/8" BSP	3/8" BSP	Blue 0 -150 Yellow 0 - 350