

CARATTERISTICHE

Portata min/max in ingresso

0.5/60 L/min - 0.1/16 GPM

Portata min/max regolata

0.5/30 L/min - 0.1/8 GPM

Pressione di lavoro Max.

315 bar 4568 PSI

Temperatura ambiente

-30 + 50°C

Temperatura olio

-30 + 80°C

Filtraggio consigliato

25 micron

Collettori in alluminio

PERFORMANCE

Min/max inlet flow-rate

Min/max regulated flow-rate

Max working pressure

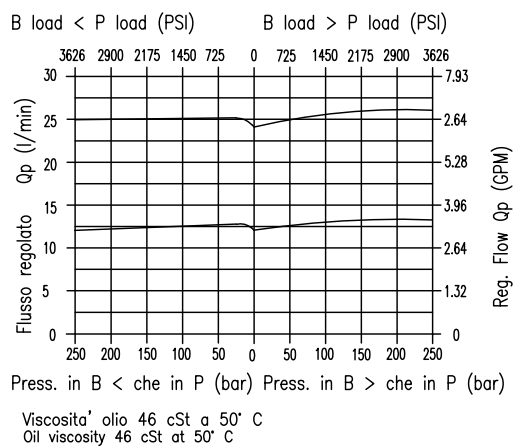
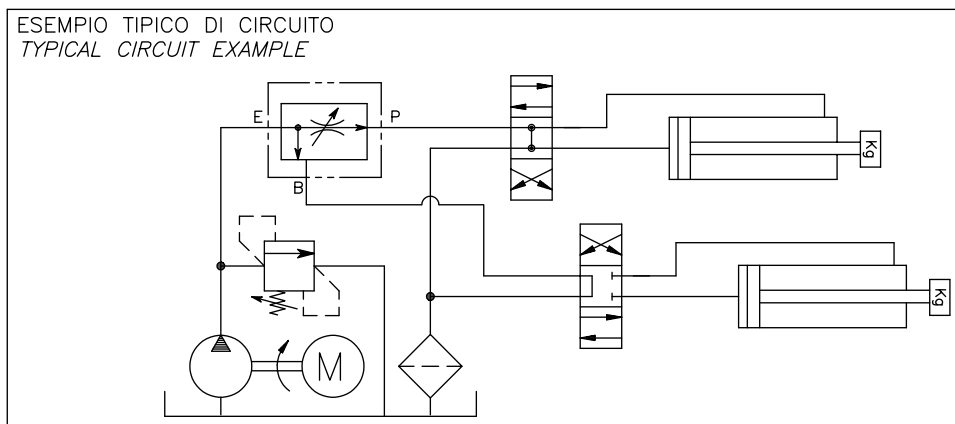
Room temperature

Oil temperature

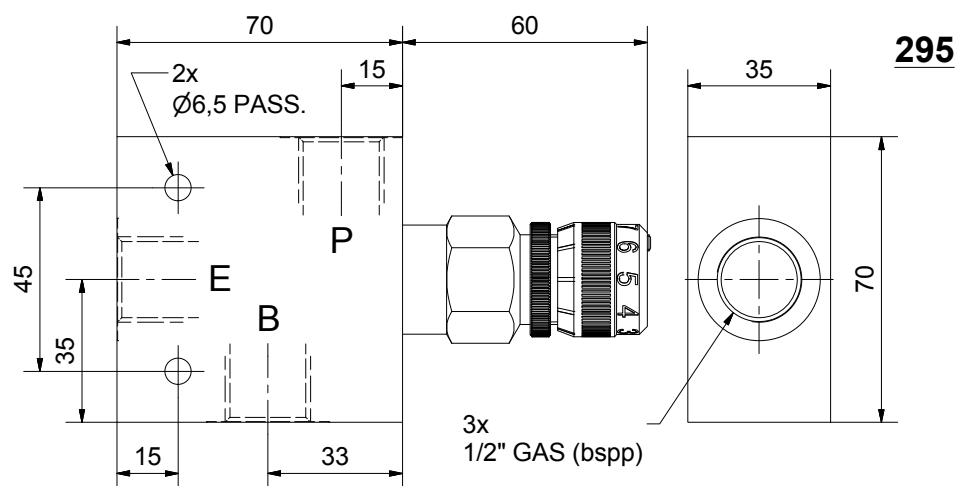
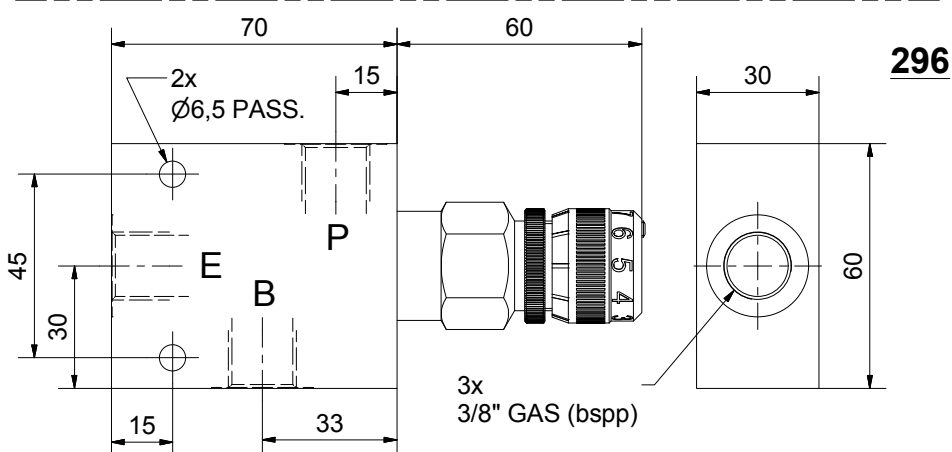
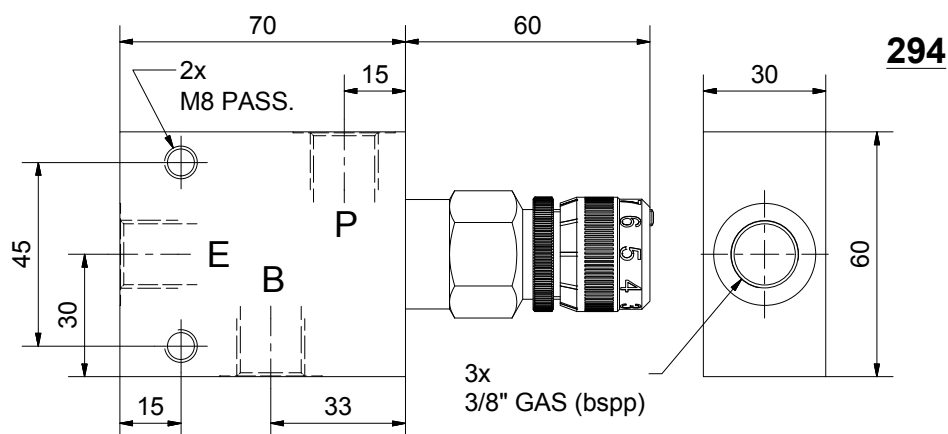
Recommended filtration

Aluminium body

ESEMPIO TIPICO DI CIRCUITO
TYPICAL CIRCUIT EXAMPLE



REGOLATORE DI FLUSSO PRIORITARIO CON ECCEDENZA IN PRESSIONE CON COLLETTORE
CARTRIDGE STYLE PRIORITY FLOW CONTROL VALVE WITH BODY.



CODICE DI ORDINAZIONE
HOW TO ORDER

004	.	294	.	0	H	0
004	.	296	.	0	H	0
004	.	295	.	0	H	0