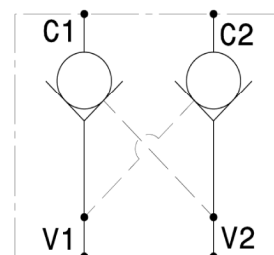
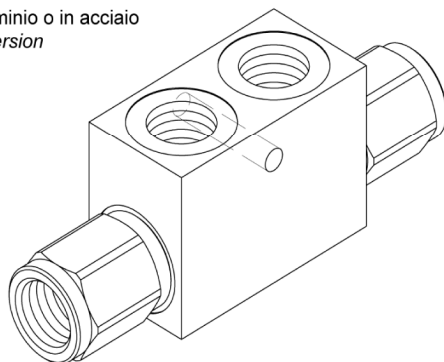


Valvola di blocco pilotata a doppio effetto a sfera o a cono
 Double effect, pilot operated check valve, ball or poppet type

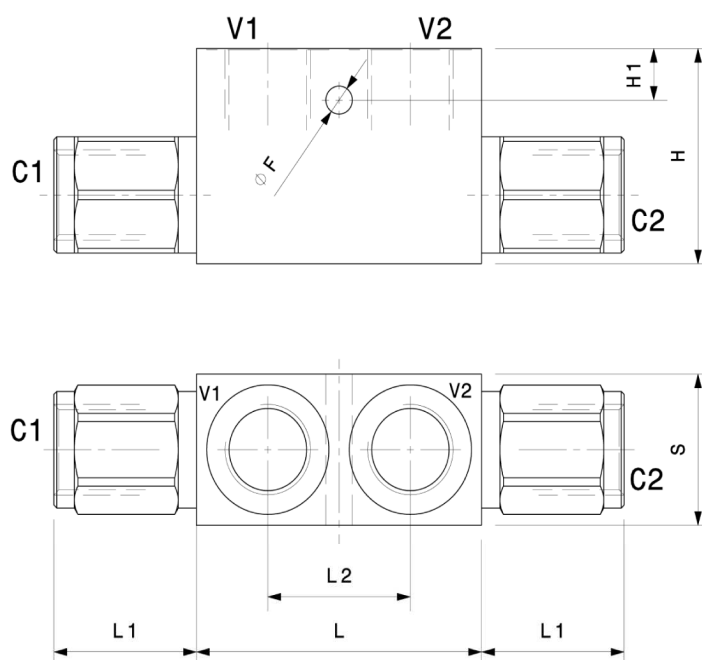
mod. **VBD-SF** (sfera – ball) / **VBD-SP** (cono – poppet)

Versione con corpo in alluminio o in acciaio
 Aluminium or steel body version



Modello Type	Rapporto di pilotaggio Pilot ratio	Portata massima Max flow l/min	Pressione massima Max pressure bar	Pressione di apertura Cracking pressure bar
VBD-14-SF	4:1	20	350	3
VBD-38-SF	4:1	35	350	3
VBD-12-SF	3:1	50	350	1
VBD-14-SP	4:1	20	350	3
VBD-38-SP	4:1	35	350	3
VBD-12-SP	3:1	50	350	1
VBD-34-SP	4:1	80	250	0.5

Dati e tarature ottenuti usando olio con viscosità 30 cSt a 50°C Performances and calibrations are carried out by using hydraulic oil with 30 cSt viscosity at 50°C	
Viscosità consigliate Recommended viscosity	10 ÷ 420 cSt
Temperatura di lavoro Working temperature	-20 ÷ +90 °C
Filtrazione assoluta Absolute filtration	25 µ



Dimensioni Dimensions	C V	L	L1	L2	H	H1	S	F
VBD-14-SF	1/4" GAS	58	27	35	40	12	25	6.5
VBD-38-SF	3/8" GAS	58	29	30	50	12	30	6.5
VBD-12-SF	1/2" GAS	70	35	35	50	12	35	6.5
VBD-14-SP	1/4" GAS	58	27	35	40	12	25	6.5
VBD-38-SP	3/8" GAS	58	29	30	50	12	30	6.5
VBD-12-SP	1/2" GAS	70	35	35	50	12	35	6.5
VBD-34-SP	3/4" GAS	100	40	50	60	15	40	8.5

Sigla di ordinazione / Ordering code

