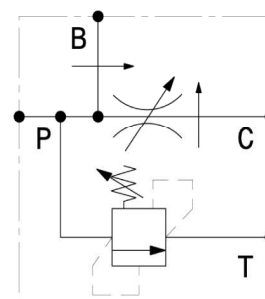
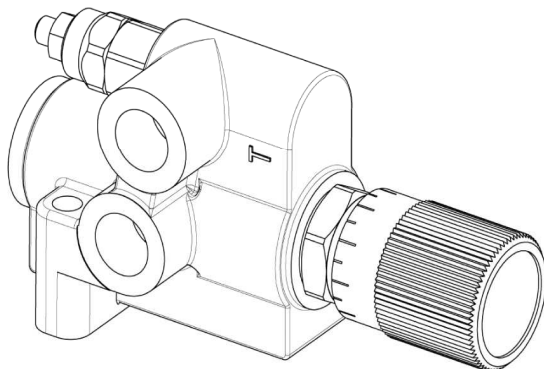


Valvola regolatrice di flusso compensata con valvola limitatrice di pressione, ghisa  
 Pressure compensated flow regulator valve with relief valve, cast iron

mod. **RF-GV**

Corpo in ghisa  
 Cast iron body



Portata massima Max flow	90 l/min
Portata regolata Regulated flow	2 ÷ 50 l/min
Pressione massima Max pressure	350 bar

#### Taratura Setting

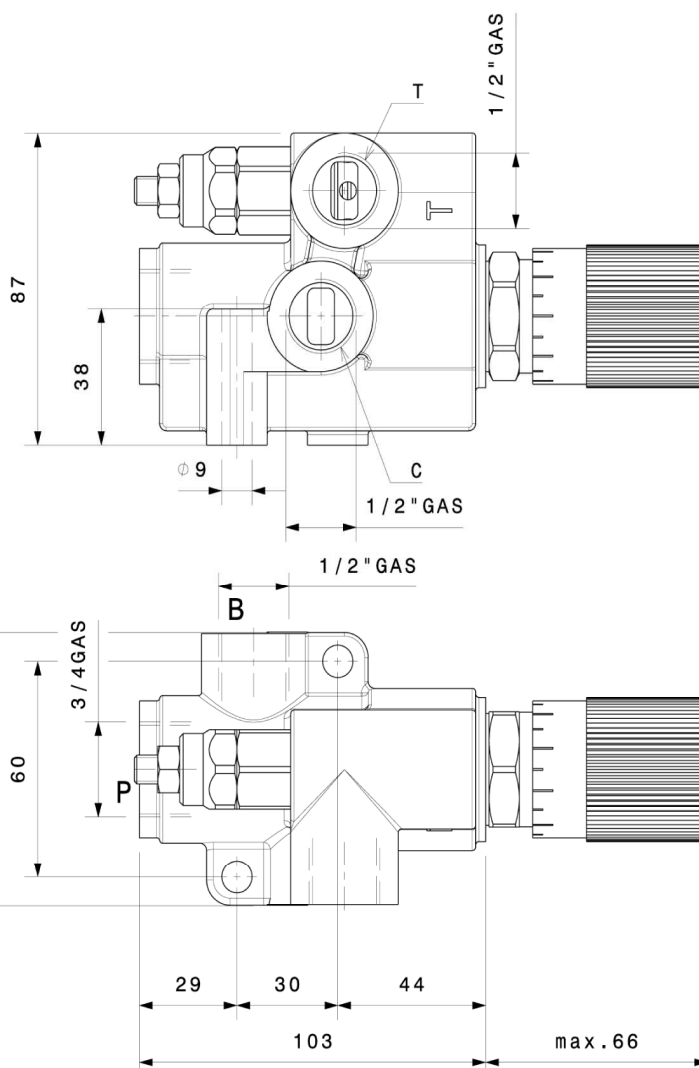
Codice Code	Taratura standard Standard setting bar (Q=5 l/min)	Campo di taratura Adj. Pressure range bar
00	40	5÷40
01	80	20÷100
02	180	40÷250
03	250	60÷350

#### Regolazioni Adjustments

<b>A</b>  Vite esterna esagono incassato Leakproof hex socket screw	<b>B</b>  Volantino e dado Handknob and locknut	<b>C</b>  Piombatura Sealing cap	<b>D</b>  Cappello Cap
---	---	---	---------------------------------

Dati e tarature ottenuti usando olio con viscosità 30 cSt a 50°C  
 Performances and calibrations are carried out by using hydraulic oil with 30 cSt viscosity at 50°C

Viscosità consigliate Recommended viscosity	10 ÷ 420 cSt
Temperatura di lavoro Working temperature	-20 ÷ +90 °C
Filtrazione assoluta Absolute filtration	25 µ



#### Sigla di ordinazione / Ordering code

