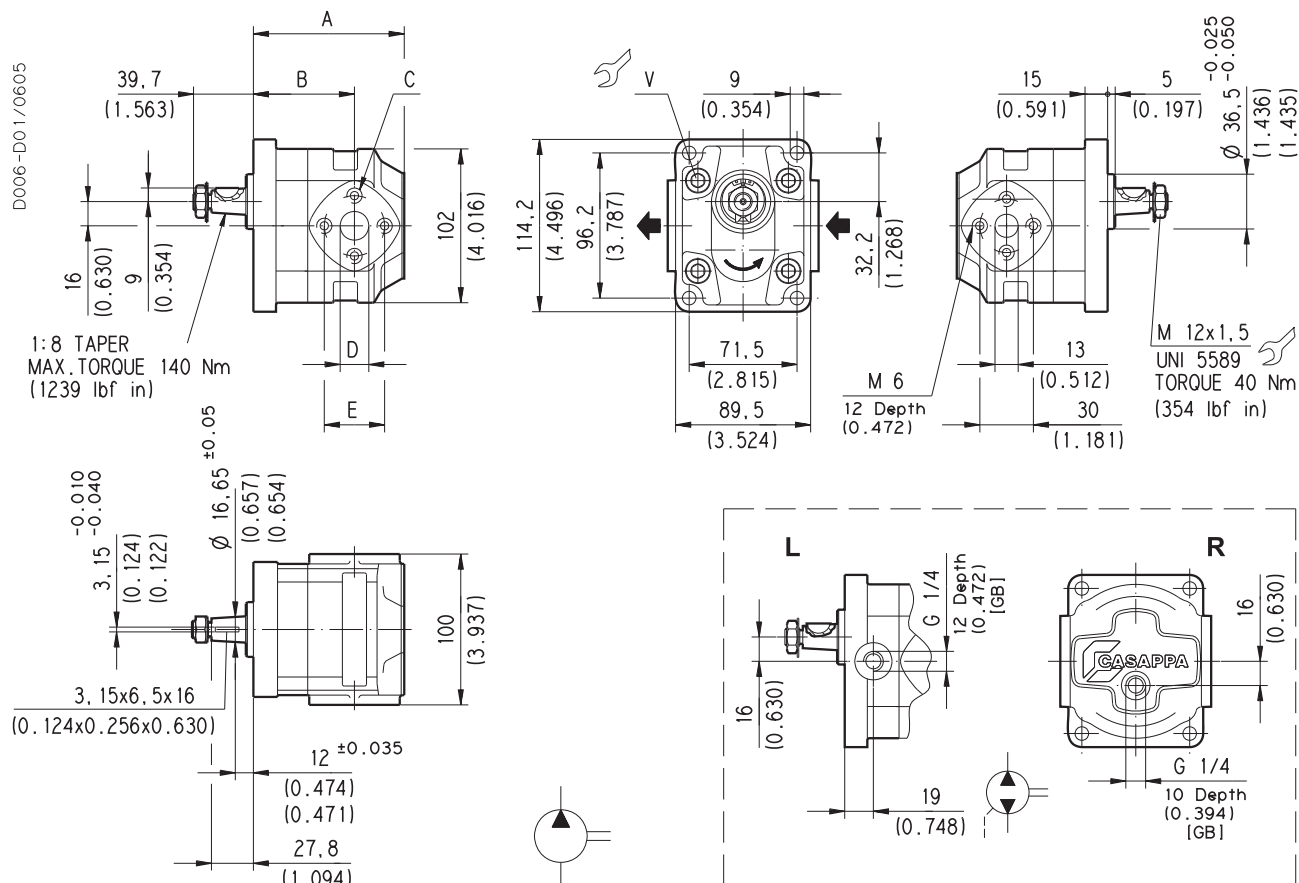


EUROPEAN FLANGED PORTS - 4 Bolts
Metric thread ISO 60° conforms to ISO/R 262



V Screws tightening torque Nm (lbf in)

70 ±7 (558 ÷ 682)

Pump type		A	B	C	D	E
		mm (in)	mm (in)	mm (in)	mm (in)	mm (in)
KP 20•4	S D L R B	87,5 (3.445)	60 (2.362)	M6 Depth 12 (0.472)	13 (0.512)	30 (1.181)
KP 20•6,3		90 (3.543)	62,5 (2.461)			
KP 20•8		92,5 (3.642)	65 (2.559)			
KP 20•11,2		96 (3.780)	68,5 (2.697)			
KP 20•14	S D L R B	100 (3.937)	67 (2.638)	M8 Depth 14 (0.551)	19 (0.748)	40 (1.575)
KP 20•16		105,5 (4.154)	72,5 (2.854)			
KP 20•20		112 (4.409)	79 (3.110)			
KP 20•25		120 (4.724)	72 (2.835)			
KP 20•31,5		130 (5.118)	82 (3.228)			

Rotation: S=left - D=right - L=reversible side drain - R=reversible rear drain - B=reversible internal drain

How to order:

KP 20•4 S0-82 E2-L EA/EA-N

02/06.2005