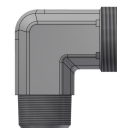
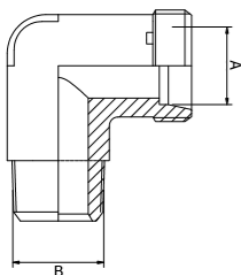


WE TUBO-ROSCA BSP



| REFERENCIA | TUBO | | ROSCA | PV S/IVA |
|------------|------|-------|-------|------------|
| | A | SERIE | B | |
| C.102001.1 | 4 | LL | 1/8 | S/Consulta |
| C.102002.1 | 6 | LL | 1/8 | S/Consulta |
| C.102003.1 | 8 | LL | 1/8 | S/Consulta |
| C.102004.1 | 6 | L | 1/8 | S/Consulta |
| C.102024.1 | 6 | L | 1/4 | S/Consulta |
| C.102025.1 | 8 | L | 1/8 | S/Consulta |
| C.102005.1 | 8 | L | 1/4 | S/Consulta |
| C.102026.1 | 8 | L | 3/8 | S/Consulta |
| C.102027.1 | 8 | L | 1/2 | S/Consulta |
| C.102028.1 | 10 | L | 1/8 | S/Consulta |
| C.102006.1 | 10 | L | 1/4 | S/Consulta |
| C.102029.1 | 10 | L | 3/8 | S/Consulta |
| C.102030.1 | 10 | L | 1/2 | S/Consulta |
| C.102031.1 | 12 | L | 1/4 | S/Consulta |
| C.102007.1 | 12 | L | 3/8 | S/Consulta |
| C.102032.1 | 12 | L | 1/2 | S/Consulta |
| C.102033.1 | 15 | L | 3/8 | S/Consulta |
| C.102008.1 | 15 | L | 1/2 | S/Consulta |
| C.102009.1 | 18 | L | 1/2 | S/Consulta |
| C.102034.1 | 18 | L | 3/4 | S/Consulta |
| C.102010.1 | 22 | L | 3/4 | S/Consulta |
| C.102011.1 | 28 | L | 1 | S/Consulta |
| C.102012.1 | 35 | L | 1.1/4 | S/Consulta |
| C.102013.1 | 42 | L | 1.1/2 | S/Consulta |
| C.102014.1 | 6 | S | 1/4 | S/Consulta |
| C.102015.1 | 8 | S | 1/4 | S/Consulta |
| C.102016.1 | 10 | S | 3/8 | S/Consulta |
| C.102017.1 | 12 | S | 3/8 | S/Consulta |
| C.102035.1 | 12 | S | 1/2 | S/Consulta |

| | | | | |
|------------|----|---|-------|------------|
| C.102036.1 | 14 | S | 3/8 | S/Consulta |
| C.102018.1 | 14 | S | 1/2 | S/Consulta |
| C.102037.1 | 16 | S | 3/8 | S/Consulta |
| C.102019.1 | 16 | S | 1/2 | S/Consulta |
| C.102038.1 | 20 | S | 1/2 | S/Consulta |
| C.102020.1 | 20 | S | 3/4 | S/Consulta |
| C.102039.1 | 25 | S | 3/4 | S/Consulta |
| C.102021.1 | 25 | S | 1 | S/Consulta |
| C.102040.1 | 30 | S | 1 | S/Consulta |
| C.102022.1 | 30 | S | 1.1/4 | S/Consulta |
| C.102023.1 | 38 | S | 1.1/2 | S/Consulta |